



Health Programs
Perdue Hall
800 College Court
New Bern, NC 28562
252-638-1168
(Fax) 252-638-4795

www.cravencc.edu

Required TEAS Test scores for Practical Nursing Program Applicants Fall 2022

Total Score	=	minimum 55%
Reading	=	minimum 60%
Math	=	minimum 50%
Science	=	minimum 40%
English Language & Usage	=	minimum 40%

This is a sample TEAS Test score report from ATI Testing.

Individual Performance Profile ATI TEAS



Individual Name:	JOHN D STUDENT	Test Date	9/5/2016
Institution:	Your Institution	Attempt	1 of 1
Program Type:	Allied Health	Days Since Last Attempt:	0

Scores

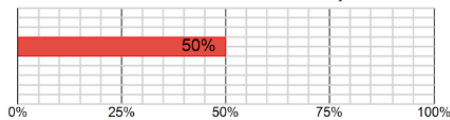
Total Score:

65.3%

Academic Preparedness Level: **Proficient**

National Mean: 65.6%

Percent of students who scored at or below your score



Reading Score:

63.8%

Math Score:

68.8%

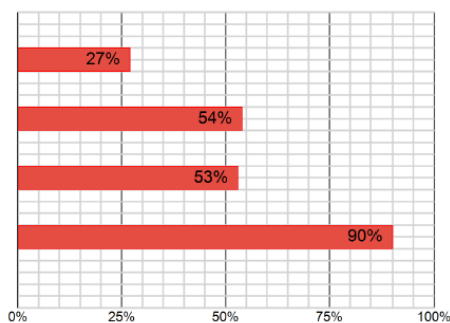
Science Score:

55.3%

English and Language Usage Score:

83.3%

Percent of students who scored at or below your score



National

Content areas do not add up to the total score

Updated: 4/15/2021

An Equal Opportunity Educational Institution

Health Programs | Perdue Hall | 252-638-1168 | (Fax) 252-638-4795